

Transportines

madera

Transport it better than you ever imagined...



*Carriers for domestic and international shipments. We adapt to your needs*

Visit us on [www.transportinesmadera.com](http://www.transportinesmadera.com)

# Transportines

# madera

Hi,

I'm Sebastià Talarn, charge of the company from Wooden Boxes for falcons and therefore I attach more information about our products.

Breeding Carriers system CLICK (2016):

Dimension 40x60x40 (height) SINGLE	16,12 €
Dimension 40x60x40(height) DOUBLE	19,01 €
Carpet on the floor 40 x 60	0,91 €
Dimension 45x75x45 (height) SINGLE	21,16 €
Dimension 45x75x45 (height) DOUBLE	23,31 €
Carpet on the floor 45x75	1,24 €
Dimension 20x20x20	7,44 €
Carpet on the floor 20x20	0,22 €
Dimension 40x45x40	15,70 €
Carpet on the floor 40x45	0,62 €
Dimension 50x50x50	25,62 €
Carpet on the floor 50x50	0,91 €

Info different dimensions in <http://www.transportinesmadera.com/etiqueta-producte/aves-rapaces/?lang=en>

Side and top opening

With the diagonal it can be convertible to single or double

Different dimensions

There is the possibility of modifying materials, thicknesses and dimensions according to quantity.

Quantity Discounts:

Discounts from 5% (50 u.)

Discounts from 10% (100 u.)

Discounts from 15% (200 u.)

For the individual 40x60x40, we reduced weight from 4 kg

Cheap transportation. Because, we supply the falcon box unfolded.

Reduced space in the storehouse.

Easiness in mounting without using machines and using only hands  
Possibility of putting screws in the holes already provided.

\* TAX = 0 € if the company is discharged as intercommunity

More info in <http://www.transportinesmadera.com/wp-content/uploads/2016/05/Wooden-Carriers-falconry-export.pdf>

For dimension 40x60x40 (sample) two options:

Option 1) 1 pallet of 1,65 height x 1,2 x 0,8 meters = 50 units

Option 2) 1 pallet of 2 height x 1,2 x 0,8 meters = 75 units

Example pallets image:

<https://www.facebook.com/transportinesmadera/photos/pb.281414538728413.-2207520000.1464694207./473123836224148/?type=3&theater>

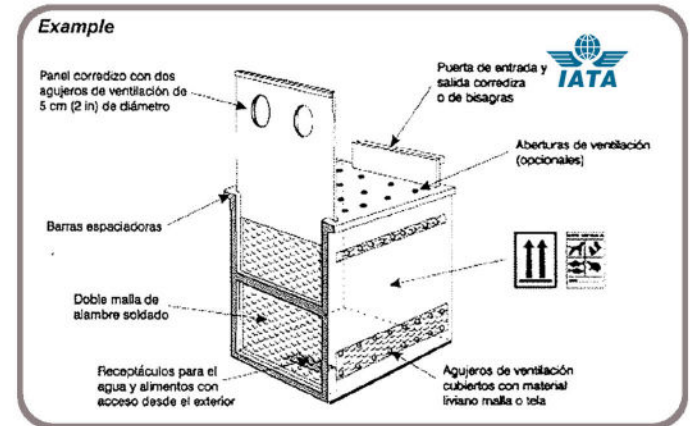
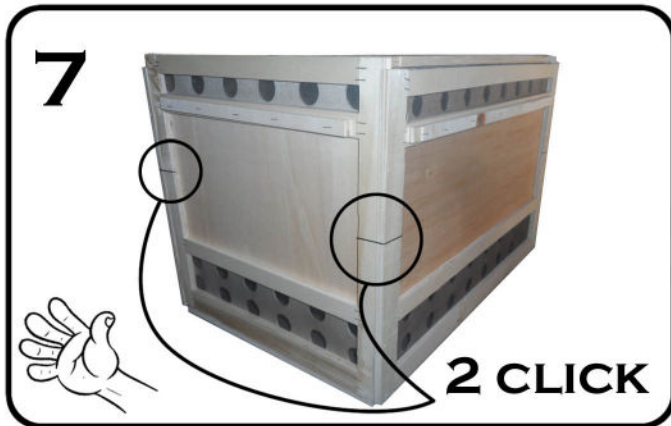
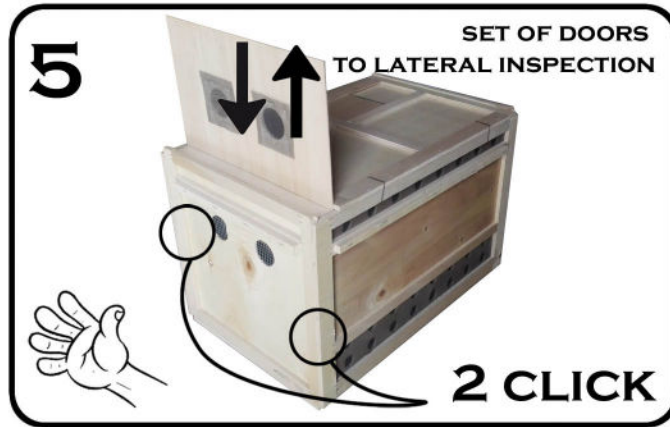
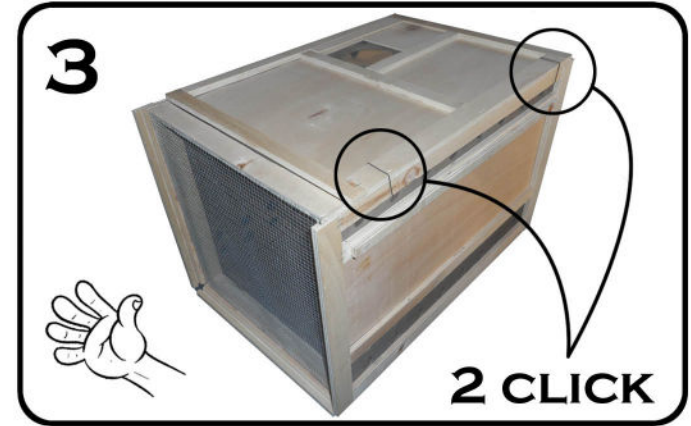
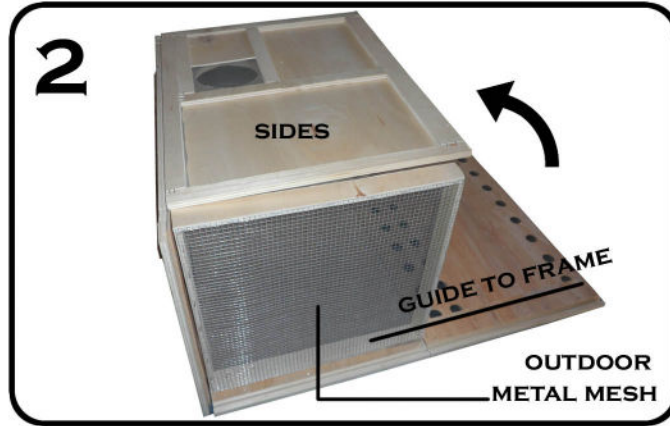
Assembly wooden boxes for falcons...1 minute:

<https://www.instagram.com/p/BGwm0xCD5B0/>

Best Regards,

Sebastià Talarn

Transportines madera



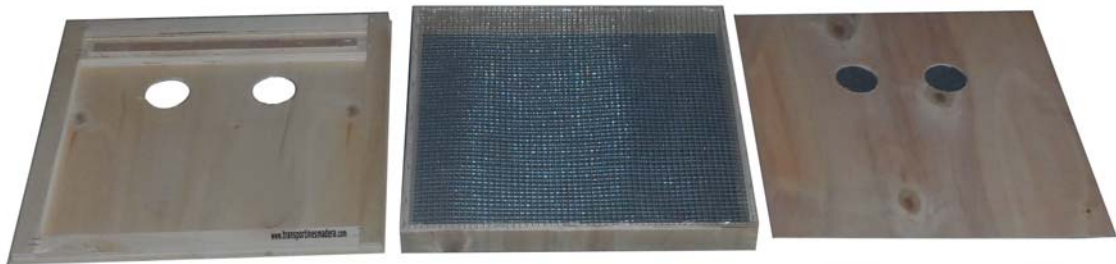
- The reference model of the scheme is 40x60x40. For other dimensions varies the number of units CLICKS
- There is the possibility of putting screws in the holes already provided.

50 u. 45x75x45

1,75 m

















































www.transportinesmateria.com

## CONTAINER REQUIREMENT 20

The illustrations shown in this Container Requirement are examples only. Containers that conform to the principle of written guidelines for the species but look slightly different will still meet the IATA standards.

**Applicable to birds of prey (including other birds of prey, n.o.s.):**

- Buzzard species
- Caracara
- Condor species
- Eagle species
- Falcon species
- Gyrfalcon
- Harrier
- Hawk species
- Kestrel species
- Kite species
- Osprey
- Owl species
- Vulture species

STATE VARIATIONS: AEG-01, AEG-02, CAG-01, GBG-01/02/04/06, USG-01

OPERATOR VARIATIONS: DL-07, DL-08, EK-02, EK-03, EK-06, EK-08, GF-02, GF-07, IR-01, IR-02, QF-01, SK-01

### 1. CONTAINER CONSTRUCTION

#### Principles of Design

The following principles of design must be met in addition to the General Container Requirements outlined at the beginning of this chapter.

#### Materials

Wood, hardboard (masonite), non-toxic plastic, fibreglass and synthetics, weld mesh and strong plastic mesh.

#### Size

The normal habits and necessary freedom of movement of the bird species involved will determine the size.

The height of the container must be sufficient to allow the bird to just be able to stand in a normal position. No head clearance is required for these species because they tend to jump up forcefully if permitted to do so.

The container or compartment of a container must be wide enough so that the bird can turn round without stretching its wings to their full extent.

Multiple-compartment containers can be used provided there is sufficient ventilation.

#### Frame

A solid wood frame, either screwed or nailed and glued with a non-toxic glue, located on the outside.

#### Sides

The sides must be either of wood or hardboard. The front must be double with the outer layer made of weld mesh and the inner layer of a strong plastic mesh with a distance of 4-5 cm (1½-2 in) between them.

The interior of the container must not have sharp edges or protuberances on which the birds can injure themselves.

#### Handling Spacer Bars/Handles

Must be provided as shown in the illustration on four sides of the container.

#### Floor

Solid and leak-proof, it can be covered with carpeting in order to allow the bird to get a firm foothold.

#### Perches

These species can travel safely standing on their feet but small raptors prefer to be off the ground and a wooden block, firmly fixed to the bottom of the container, will allow it to feel secure.

#### Stocking Density

One bird per container or compartment of a container.

#### Roof

Must be padded with a soft non-destructible padding.

#### Door

A vertical or horizontal sliding or hinged door must be constructed to cover the front plastic mesh of the container and it must have at least two observation openings of approximately 5 cm (2 in) in the upper third.

#### Ventilation

Meshed ventilation openings, approximately 2.5 cm (1 in) in diameter must be provided at approximately 5 cm (2 in) distance apart along all four sides of the container. There must be a line of openings near the base large enough to allow some light into the container in order that the bird can see well enough to eat while remaining in semi-darkness. The openings must be covered by external wiremesh but care must be taken that there are no sharp edges present within the container, all edges must be covered with a smooth material.

#### Feed and Water Containers

Water containers must be provided, they must be accessible for refilling.

These birds feed from the floor so do not require food troughs.

Soldered tin must never be used.

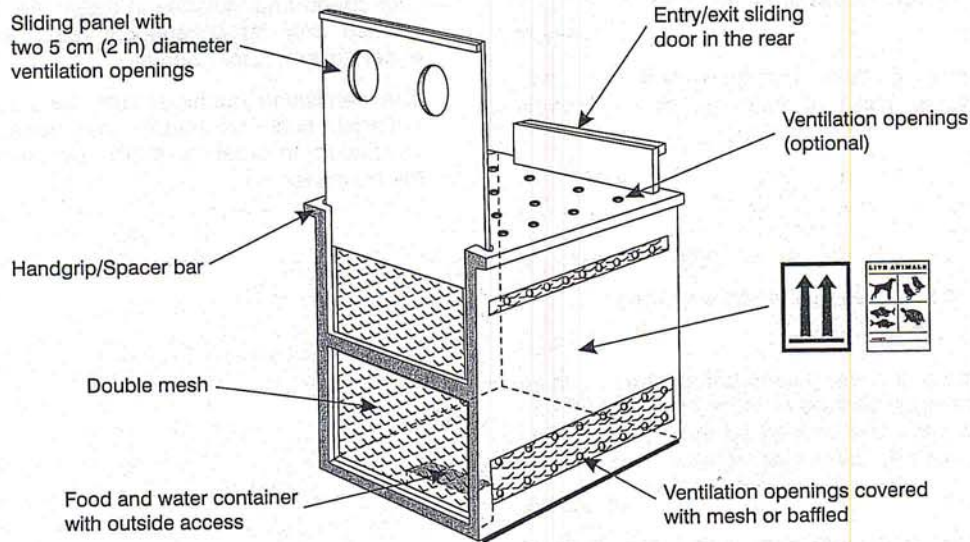
## Rigid Plastic Pet Containers (see *Container Requirement 1*)

A modified rigid plastic pet containers is suitable for use. The following modifications must be made:

- a fixed foothold blocks or non-slip floor lining must be fixed appropriately to the floor of the container;
- non-destructible padding must be fixed to the roof;
- the doors and ventilation openings must be baffled with a suitable material to permit air to enter but keep the container in semi-darkness;

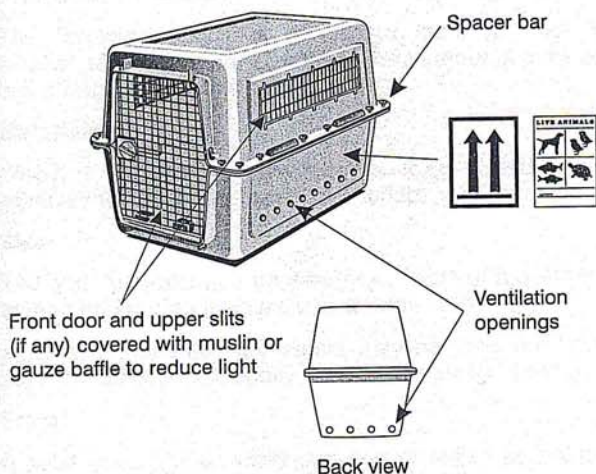
- an observation opening/flap into the container must be present;
- a suitable water container must be fixed inside the container with a means of refilling;
- labelling must conform to IATA standards for Live Animals;
- if a container has wheels, they must be removed or rendered inoperable.

### EXAMPLE:



**Note:**  
*Food and water troughs must be provided.*

### TYPICAL RIGID PLASTIC CONTAINER



## 2. PREPARATIONS BEFORE DISPATCH (see Chapter 5)

It is advisable that shippers must ensure that wild birds have been held after capture for approximately thirty days before dispatch to overcome the stress of capture and allow them to become accustomed to confinement and their new diet. It is of the utmost importance that all birds be given, under close supervision, an opportunity to drink an ample supply of water before departure.

These species are shipped one per compartment of a multiple container or one per container. The only exception to this rule is when nestlings are being moved for a specific reason which must be cleared with the relevant authorities at the time of reservation.

Falcons and hawks—the bird must be given its normal food prior to dispatch which must be sufficient up to 24 hours. The tail feathers of these birds damage easily. Adhesive brown paper strips (not plastic tape) bound around the tail feathers for protection, which can be soaked off at the end of the journey, have been used successfully.

The weld with a  
edges rem-  
four  
ng in  
feet  
id a  
iner,  
r.  
t be  
the  
ition  
ird.  
cm  
ately  
the  
iner  
/hile  
be  
ken  
the  
both  
be  
ood  
2015









